



MARIANO MARCOS STATE UNIVERSITY

Bids and Awards Committee

INVITATION TO MAKE AN OFFER: Negotiated Procurement

21-011-1

THE PROJECT: Refurbishment of Career Hub Center, Student Center Building

Number of Working Days: 75 calendar days

ABC: P899,273.55

1. The Mariano Marcos State University (MMSU), with offices at Quiling Sur, City of Batac, Ilocos Norte, invites the public to make an offer to furnish all labor, materials, tools and equipment necessary and proper for the implementation of the above Project as per approved designs, plans and drawings.
2. This process is in accordance with Section 53 of R.A. 9184, the Government Procurement reform Act and Section 53.9 of the Implementing Rules and Regulations where interested and qualified contractors are to submit proposals.
4. The offer must be in writing submitted at the address below on or before **October 11, 2021; 2:00 PM** together with the following documents:
 - a) The amount of the offer in writing duly signed by the person making the offer, indicated in numbers and figures.
 - b) The particulars of the offer as to labor, materials, tools, equipment and other work details.
 - c) Documents in support of the legal, technical and financial capability of the person making the offer, which documents shall be confirmed and verified (3 copies).
5. It is understood that any offer may be accepted or rejected, or the process invalidated, at any time prior to contract award, without liability to anyone.
6. Documents for this procurement may be secured from the MMSU BAC Secretariat at the address below or downloaded from the MMSU website or from the Philippine Government Electronic Procurement System (PhilGEPS) website.
7. For questions and inquiries, please write or email the University President, thru the BAC Chair, at the address indicated below.

Mariano Marcos State University
 Quiling Sur, City of Batac
 www.mmsu.edu.ph

October 7, 2021

NATHANIEL R. ALIBUYOG
 BAC CHAIR

Received: _____

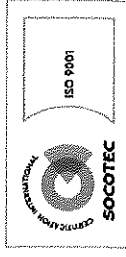
Received: _____

Received: _____

Rm105 FEM Hall, MMSU, #16S Quiling Sur, City of Batac, Ilocos Norte
 bac@mmsu.edu.ph ☎ (077) 600-0459 www.mmsu.edu.ph



STARS
RATING SYSTEM



Project Information Document

PROJECT TITLE: Refurbishment of Career Hub Center, Student Center Building
PROJECT LOCATION: MMSU Batac Campus, Ilocos Norte

The construction procedures shall be done in accordance with standard specifications and in full compliance with the approved plans and this **Project Information document**.

Pertinent notes appearing in the **Contract Plans or Drawings** shall also be considered as part and parcel of this **Project Information Document**. Such notes shall take precedence over the **General Specifications**.

1. Roughing Works

This item shall consist of labor for the Clearing the area prior to construction and installation and cleaning of the area after the project is completed. The Contractor is mandated to assist to where existing equipment in the area are to be temporarily placed. Coordination to the Project in-charge from the University or end-user is a must.

2. Millworks

This item shall consist of furnishing all materials, hardware, tools, labour and services necessary for complete fabrication and installation of aluminium glass partitions and the type and size as shown on the Plans and in accordance with the specifications. The contractor is required to submit sample of materials to be used prior to fabrication and installation under this scope of work. Aluminum Glass partition shall be measured and paid for on the basis of number of sets completely installed and accepted by the *Engineer*.

3. Furnitures

This item of work includes different types of furniture. This includes material, fabrication, delivery and installation.

Bulletin Board:

1.20m x 2.40m Wall Signboard, Printed LED Lightbox Signs. Prior to purchasing the Contractor is advised to coordinate to the project incharge or the enduser for approval of the said material.

Lounge Area:

Conference Room Table and Chairs (for 8 persons), Couch Set with mini table, Decorative Partition Wall, 0.50m x 1.8m x 0.65mheight Floor Mounded Cabinet/Drawer/File Storage. Prior to purchasing the Contractor is advised to coordinate and show sample or brochures to the project incharge or the enduser for approval of the said material.

Counseling Area:

Chairs, 2.10m x 1.00m Conference Table, 0.60m dia. Glass table with Stand. Prior to purchasing the Contractor is advised to coordinate and show sample or brochures to the project incharge or the enduser for approval of the said material.

Computer Room:

Modular Partition and Tables with chairs (for 10 person). Prior to purchasing the Contractor is advised to coordinate and show sample or brochures to the project incharge or the enduser for approval of the said material.

Benches:

2.20m length Metal Bench with backrest. Prior to purchasing the Contractor is advised to coordinate and show sample or brochures to the project incharge or the enduser for approval of the said material.

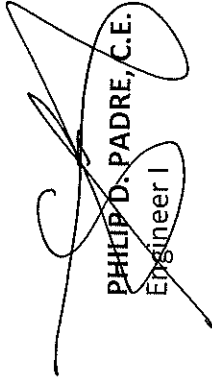
After all the works have been completed, the surrounding immediate areas affected in the prosecution of the project shall be cleaned and cleared of all excess materials and debris, temporary structures, facilities and utilities used during the construction period.

A. Time is a very important factor in the implementation of this project and as such, all works indicated in the plans, specifications and in this document shall be completed within - **75- calendar days** from receipt of the Notice to Proceed;

B. The contractor, before turning over the completed project to the University, shall clean the areas covered by the contract and dispose all construction debris and wastes;

1. The Approved Budget for the Project to be bid is **Eight Hundred Ninety-Nine Thousand Two Hundred Seventy-Three and 55/100 Pesos (Php. 899,273.55).**
2. All bids must be submitted to the BAC Chairman, MMSU-Batac, Ilocos Norte not later than _____.

Prepared by:




PHILIP D. PADRE, C.E.
Engineer I

Checked by:

AIDA V. CABANG ^{MPH}
Architect IV, Chief Planning

Recommend Approval:



ROMEO R. DUEPUTAO
Director, PPDO

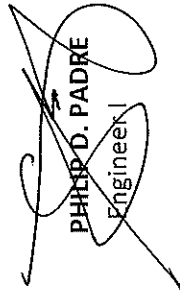


SPECIFICATION

Project Title: Rehabilitation of Career Hub Center
Project Location: MMSU, City of Batac, Ilocos Norte

ITEM NO.	DESCRIPTION
I.	Roughing Works Site Preparation Clearing and Cleaning
II.	Millworks Materials, hardware, tools, labour and services necessary for fabrication and installation Aluminum Glass Partition Aluminum Glass Doors
III.	Furnitures Bulletin Board: 1.20m x 2.40m Wall Signboard, Printed LED Lightbox Signs (Sticker design and presentation designs to be provided by the end-user) Lounge Area: Conference Room Table and Chairs (for 8 persons) Couch Set with mini table Decorative Partition Wall 0.50m x 1.8m x 0.65mheight Floor Mounded Cabinet/Drawer/File Storage Counseling Area: Chairs 2.10m x 1.00m Conference Table 0.60m dia. Glass table with Stand Computer Room: Modular Partition and Tables with chairs (for 10 person) Benches: 2.20m length Metal Bench with backrest

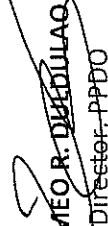
Prepared By:


PHILIP D. PADRE
 Engineer

Checked by:


AIDA V. CABANG
 Architect IV, Chief Infra.

Recommending Approval:

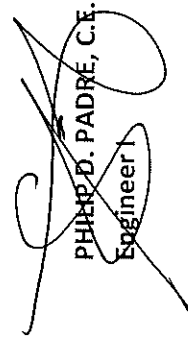

ROMEO R. DUEULLAO
 Director, PPD0

Title: **Refurbishment of Career Hub Center**
 Location: **MMSU, City of Batac, Ilocos Norte**

Bill of Quantities

Item No.	Description	Quantity	Unit
I.	Roughing Works		
	Building Permits and Clearances	1	lot
II.	Millworks		
	Aluminum Glass Partition	1	lot
III.	Aluminum Glass Doors		
	Furnitures		
	<i>Bulletin Board:</i>		
	1.20m x 2.40m Wall Signboard, Printed LED Lightbox Signs (Sticker design and presentation designs to be provided by the end-user)	2	units
	<i>Lounge Area:</i>		
	Conference Room Table and Chairs (for 8 persons)	1	set
	Couch Set with mini table	1	set
	Decorative Partition Wall	1	set
	0.50m x 1.8m x 0.65mheight Floor Mounded Cabinet/Drawer/File Storage	1	set
	<i>Counseling Area:</i>		
	Chairs	20	sets
	2.10m x 1.00m Conference Table	1	set
	0.60m dia. Glass table with Stand	6	sets
	<i>Computer Room:</i>		
	Modular Partition and Tables with chairs (for 10 person)	1	set
	<i>Benches:</i>		
	2.20m length Metal Bench with backrest	4	sets

Prepared by:


PHILIP D. PADRE, C.E.
 Engineer I



DETAILED ESTIMATES

Item No.: I	Quantity:
Description: Roughing Works	Unit: lot

	Description	Quantity	Unit	Unit Price	Sub-Total
MATERIALS COST					
	Total Materials Cost			Sub-Total	
				Unit Cost	
EQUIPMENT COST	Description	Quantity	Unit	Unit Price	Sub-Total
	Total Equipment Cost			Sub-Total	
				Unit Cost	
LABOR COST	Description	Quantity	Unit	Unit Price	Sub-Total
	Total Labor Cost			Sub-Total	
				Unit Cost	

DIRECT COST:
 DIRECT UNIT COST:

Plus Indirect Cost:
 OCM
 VAT
 Indirect Unit Cost:

Total Direct and Indirect Cost:

Republic of the Philippines
MARIANO MARCOS STATE UNIVERSITY
 City of Batac, 2906, Ilocos Norte

DETAILED ESTIMATES

Item No.: II	Quantity: 1.00	iot
Description: Millworks	Unit:	iot

	Description	Quantity	Unit	Unit Price	Sub-Total	
MATERIALS COST	Partition:					
	7.20m x 2.80m Aluminum Analok with Frosted Sticker (Entire Glass Area), with 1/2"thick Clear Glass		units			
	1.65m x 2.80m Aluminum Analok with Frosted Sticker (Entire Glass Area), with 1/2"thick Clear Glass		units			
	1.65m x 2.10m Aluminum Analok with Frosted Sticker (Entire Glass Area), with 1/2"thick Clear Glass		units			
	1.25m x 2.10m Aluminum Analok with Frosted Sticker (Entire Glass Area), with 1/2"thick Clear Glass		units			
	4.50m x 2.80m Aluminum Analok with Frosted Sticker (Entire Glass Area), with 1/2"thick Clear Glass		unit			
	Doors:					
	0.80m x 2.10m Framless Glass Door (1/2" Thick glass)		units			
	Note: This Includes Material, Fabrication, Delivery and Installation					
	Total Materials Cost				Sub-Total	-
				Unit Cost	-	
					-	
EQUIPMENT COST	Description	Quantity	Unit	Unit Price	Sub-Total	
	Total Equipment Cost			Sub-Total		
				Unit Cost		
LABOR COST	Description	Quantity	Unit	Unit Price	Sub-Total	
	Total Labor Cost			Sub-Total		
				Unit Cost		

DIRECT COST:
 DIRECT UNIT COST:
 Plus Indirect Cost:
 OCM
 VAT
 Indirect Unit Cost:

Total Direct and Indirect Cost:

Republic of the Philippines
MARIANO MARCOS STATE UNIVERSITY
 City of Batac, 2906, Ilocos Norte

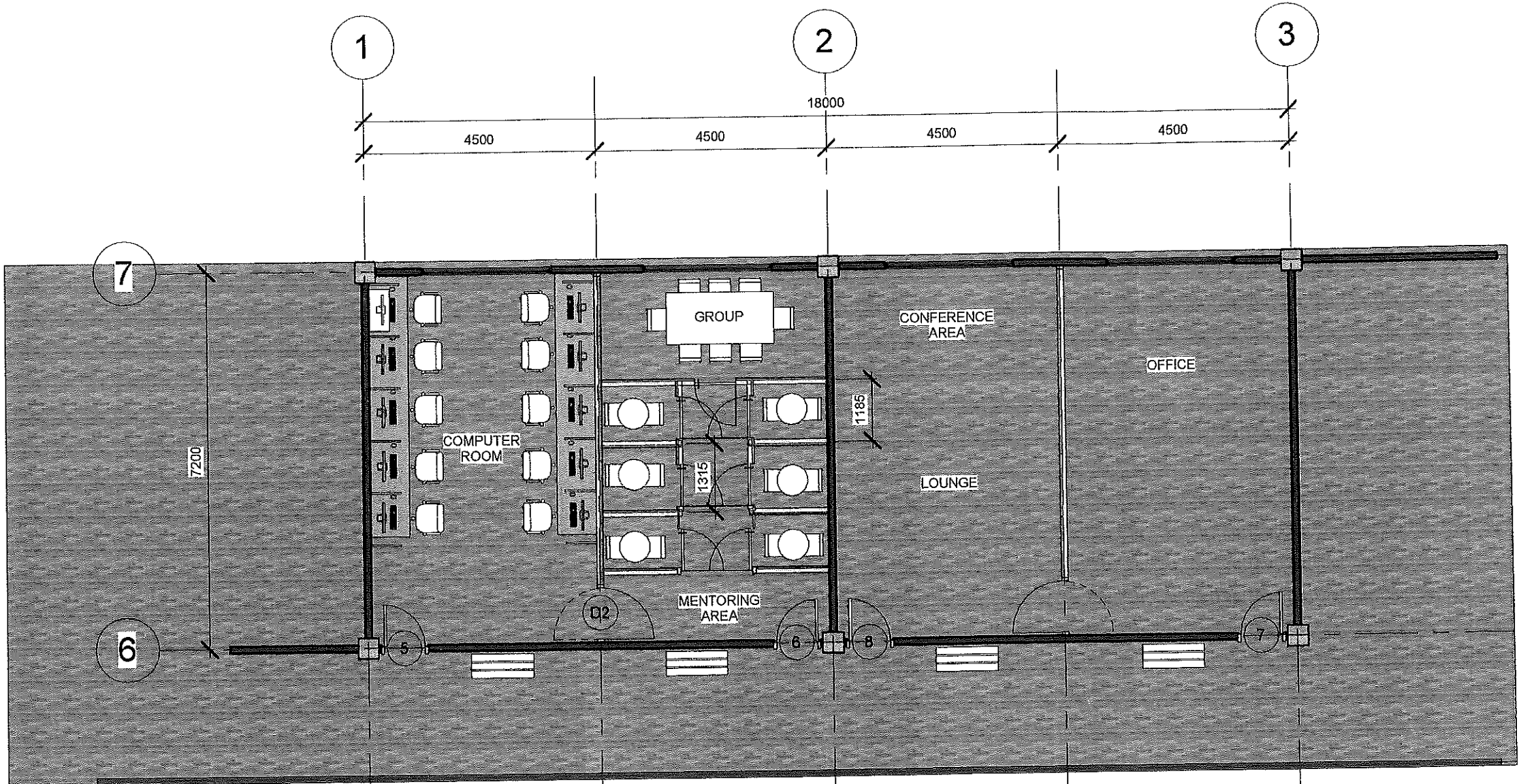
DETAILED ESTIMATES

Item No.:	Description:	Quantity:	Unit Price	Sub-Total	
III	Furnitures	Unit	lot	1.00	
MATERIALS COST	Bulletin Board: 1.20m x 2.40m Wall Signboard, Printed LED Lightbox Signs (Sticker design and presentation designs to be provided by the end-user)	units			
	Lounge Area: Conference Room Table and Chairs (for 8 persons)	set			
	Couch Set with mini table	set			
	Decorative Partition Wall	set			
	0.50m x 1.8m x 0.65mheight Floor Mounded Cabinet/Drawer/File Storage	set			
	Counseling Area: Chairs	sets			
	2.10m x 1.00m Conference Table	sets			
	0.60m dia. Glass table with Stand	sets			
	Computer Room: Modular Partition and Tables with chairs (for 10 person)	sets			
	Benches: 2.20m length Metal Bench with backrest	sets			
Note: This Includes Material, Fabrication, Delivery and Installation					
Total Materials Cost			Sub-Total		
			Unit Cost		
EQUIPMENT COST	Description	Quantity	Unit Price	Sub-Total	
	Total Equipment Cost			Sub-Total	-
				Unit Cost	-
	Description		Quantity	Unit Price	Sub-Total
LABOR COST	Total Labor Cost			Sub-Total	
				Unit Cost	

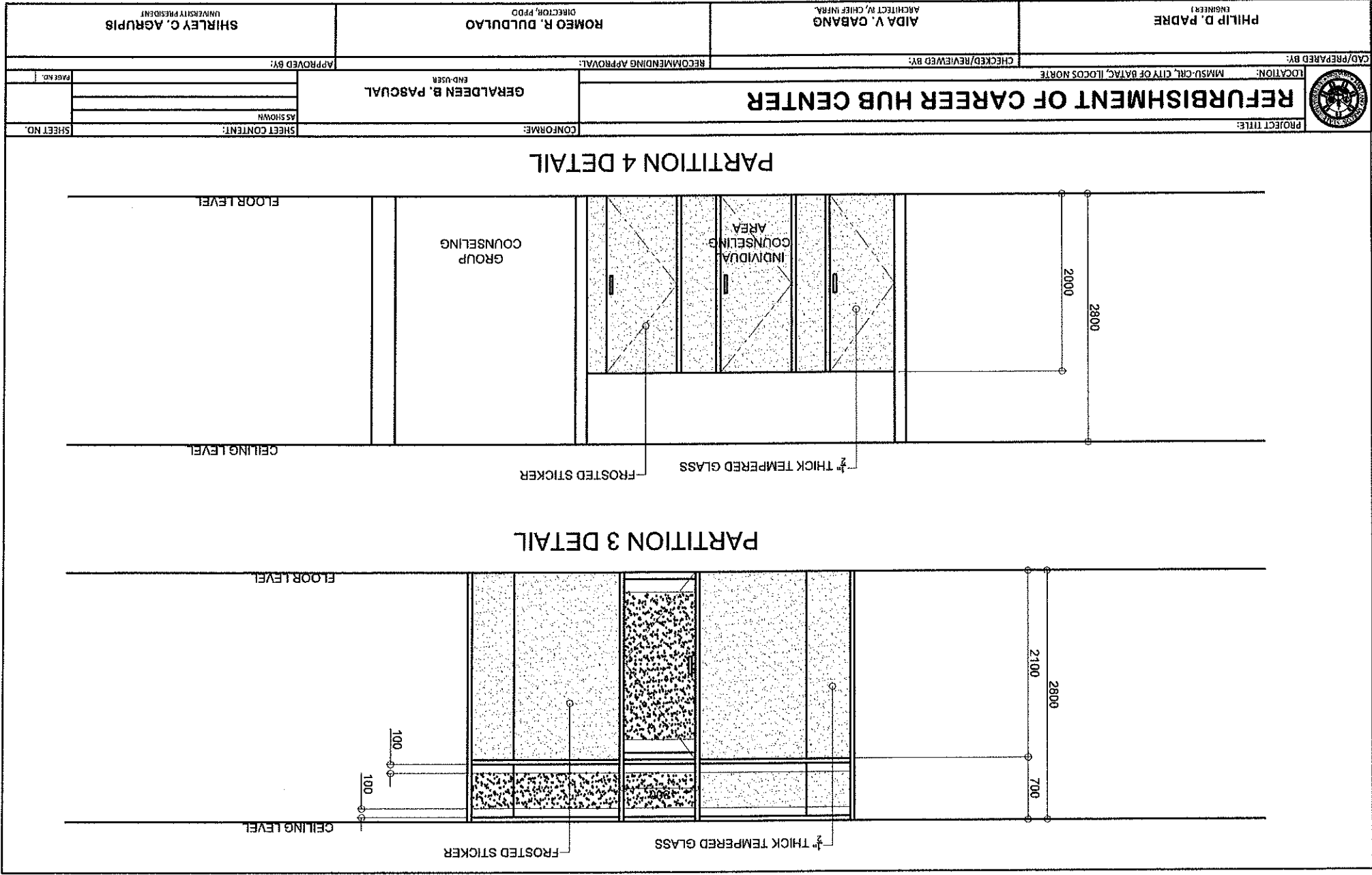
DIRECT COST:
 DIRECT UNIT COST:

Plus Indirect Cost:
 OCM
 VAT
 Indirect Unit Cost:

Total Direct and Indirect Cost:



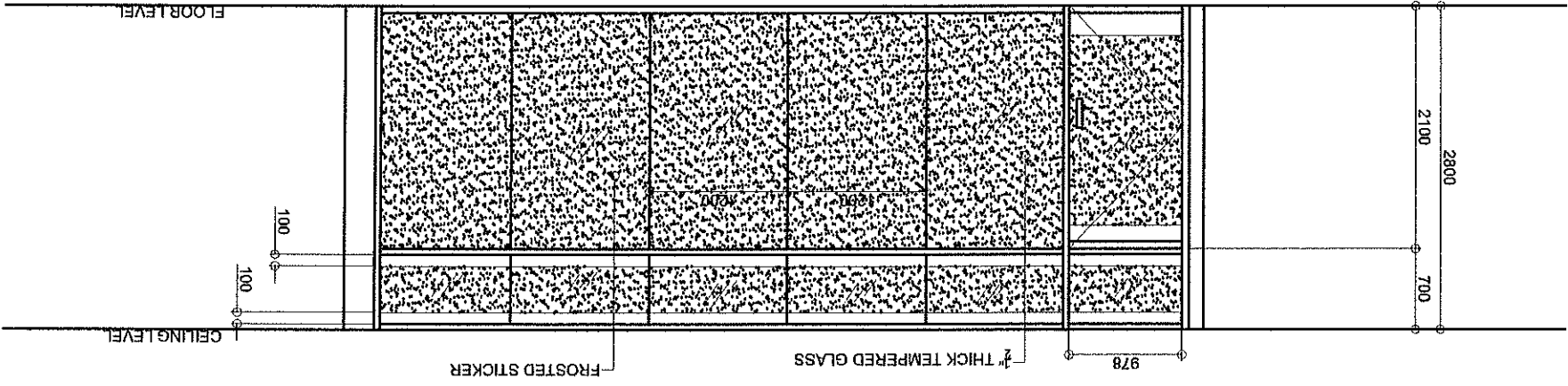
FLOOR PLAN



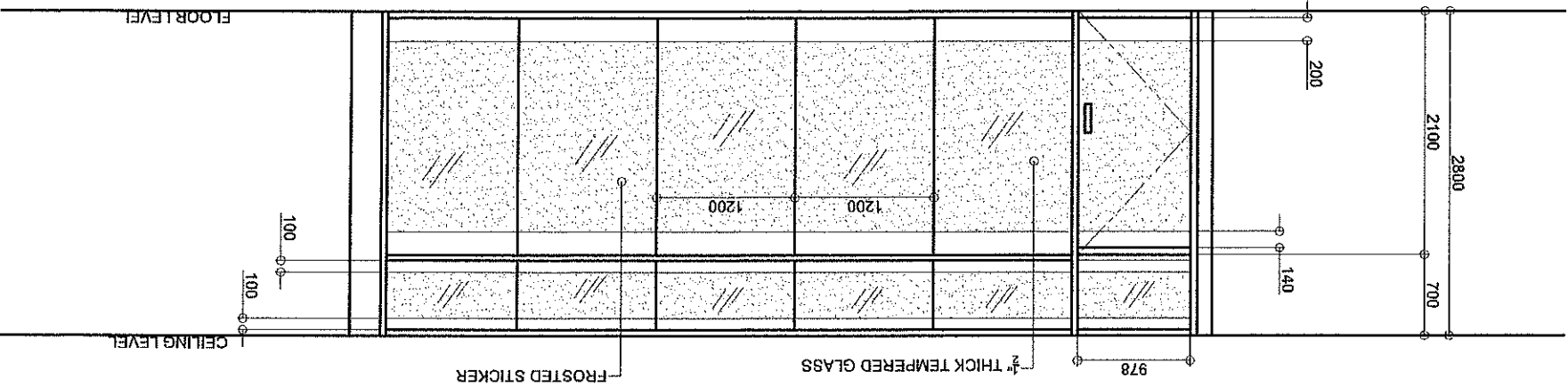
PROJECT TITLE: REFURBISHMENT OF CAREER HUB CENTER		CONFORMS: SHEET CONTENT: AS SHOWN	
LOCATION: MMSU-CRL, CITY OF BATAC, ILOCOS NORTE		SHEET NO.	
CAD/PREPARED BY: PHILIP D. PADRE ENGINEER I		APPROVED BY:	
CHECKED/REVIEWED BY: AIDA V. CABANG ARCHITECT IV, CHIEF INFRA		RECOMMENDING APPROVAL: ROMEO R. DULUJAO DIRECTOR, FPDO	
ENB-USER: GERALDEEN B. PASUAL		SHIRLEY C. AGRUPIS UNIVERSITY PRESIDENT	




PARTITION 2 DETAIL



PARTITION 1 DETAIL



PHILIP D. PADRE ENGINEER I	AIDA V. CABANG ARCHITECT IV, CHIEF INFRA	ROMEO R. DULDULAO DIRECTOR, PPDD	SHIRLEY C. AGRUPIS UNIVERSITY PRESIDENT
CAD/PREPARED BY:		CHECKED/REVIEWED BY:	RECOMMENDING APPROVAL:
LOCATION: MMSU-CRL, CITY OF BATAAC, ILOCOS NORTE		END-USER GERALDEEN B. PASQUAL	APPROVED BY:
PROJECT TITLE: REFURBISHMENT OF CAREER HUB CENTER		CONFORME:	SHEET CONTENT:
		AS SHOWN	SHEET NO.

